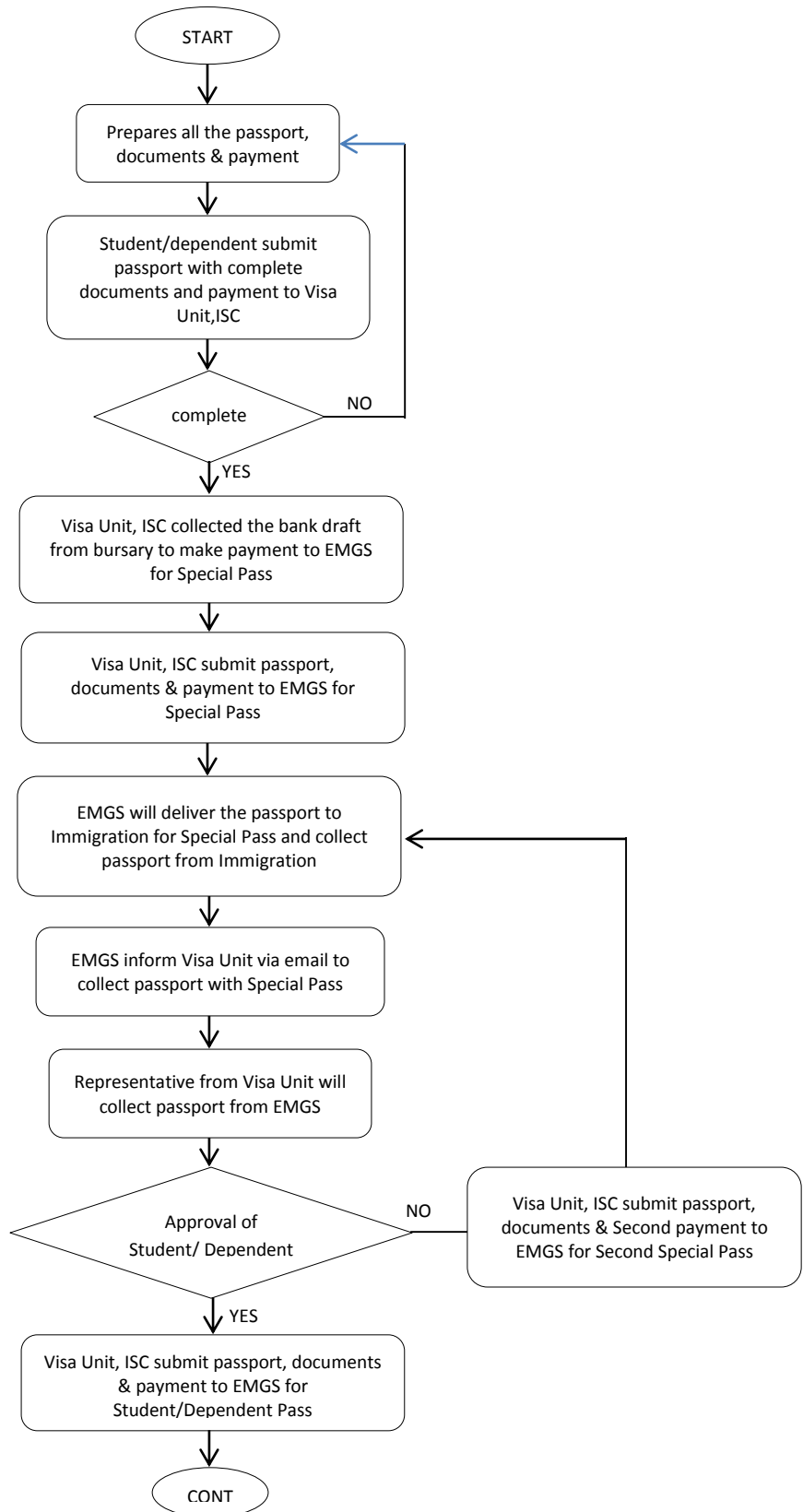


PROCESS FLOW OF SPECIAL PASS (Refer for Student/Dependent Pass)

STUDENT/DEPENDENT HAVE TO SUBMIT 90 DAYS BEFORE THEIR PASS/VISA EXPIRY DATE.

1. Application received less than 6 weeks will be charged 1ST Special Pass of RM153.00

2. Application received less than 2 weeks will be charged 1st and 2nd Special Pass of RM359.00



PROCESS FLOW OF SPECIAL PASS (Refer for Student/Dependent Pass)...2

